

WILD GOOSE TALES

FALL QUARTER 2018



BOARD MEMBERS

PRESIDENT

DAVE LANDKAMER

VICE-PRESIDENT

STEPHEN SUCKOW

SECRETARY

DIANE YOUNG

TREASURER

JILL SCOFIELD

STORE MANAGERS

JEANNE TAYLOR

LENA PROEBSTING

DIRECTORS

BRIAN WACHELKA

AZIZAH MOHD

DOUG SPENCER

DEBBIE MAYNARD

KATIE BERNSTEIN

KRIS EBBE

JILL SCOFIELD

COWLI VILLIARDOS

KEVIN KEYES

President's Column



Dave Landkamer

Our planet and calendar have turned full circle once again, and the dusky Canada geese and many other migrants have come back to their winter homes in our valley. Like these waterfowl, this is a time of year when many of us return to our homes, our core values, to bring our focus back to the things that matter most to us.

The Friends of the Willamette Valley National Wildlife Refuge Complex is doing this too. We are coming home again to our core values, and are taking a big step in the direction of our mission and vision by reaching out to our valley communities and asking them to join

us in conserving, appreciating, and enjoying our local natural resources.

The Friends mission has three simple, interlocking parts:

1) PROMOTE

the conservation of the natural resources of the refuge complex.

2) FOSTER

awareness and appreciation of the refuge complex through educational and recreational opportunities.

3) PARTICIPATE in activities that help the refuge complex achieve its goals.

Our new monthly, first Sunday outreach activities address all three of these mission statements, directly and creatively, and our first three events this fall have been a big success. In October, we led an off-trail hike through the heart of William L. Finley NWR to mark the end of the open hiking season

FRIENDS' MISSION

The Friends of the Willamette Valley Refuge Complex is an independent nonprofit organization whose mission is to:

- *Promote the conservation of the natural resources of the Refuge Complex*
- *Foster awareness and appreciation of the Complex through educational and recreational opportunities*
- *Participate in activities that help the Complex achieve its goals.*

In November, we partnered with Salem Audubon Society to welcome back and learn about migratory waterfowl at Ankeny NWR. And in December, we gathered again at William L. Finley NWR to watch and learn about our local Roosevelt elk herd. Three more exciting events are scheduled for first Sundays in the new year:

January 6: The Swans of Baskett Slough

February 3: Bird Watching with the OSU Bird Nerds

(Continued on page 16)

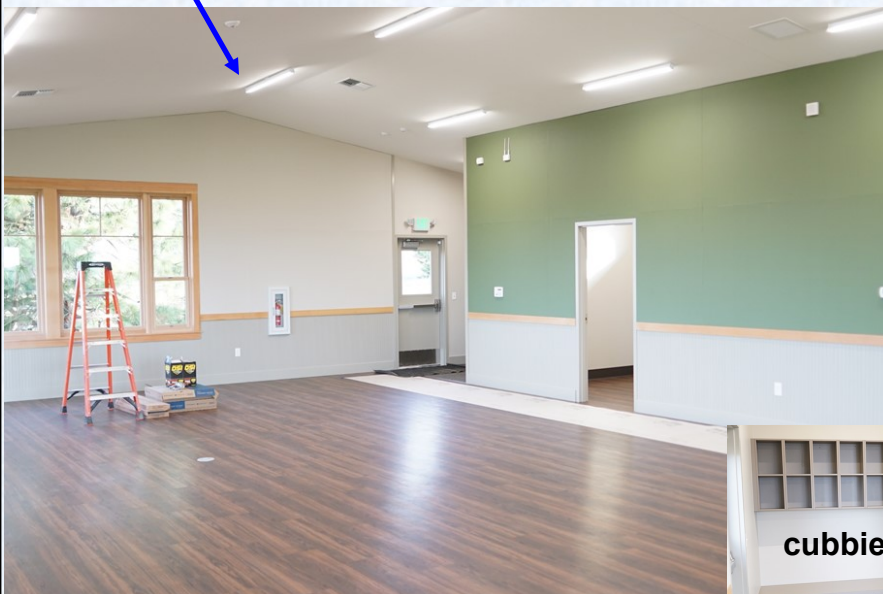


From Dream to Reality: Ankeny Nature Center is Nearly Complete



The indoor classroom

The outdoor classroom



cubbies

Finishing touches are being added to the Nature Center. A covered, outdoor classroom complete with sink and storage cabinets will allow for all-weather, year-round learning. The spacious indoor classroom includes cubbies for coats and gear. The area around the Center is also being transformed with 2200 bulbs planted by volunteers for habitat restoration, and a new driveway and overflow parking area to accommodate future visitors and school-children.



Photo: Chris Quinn



“The Swans of Baskett Slough” Nature Walk

Sun., January 6, 1-3PM

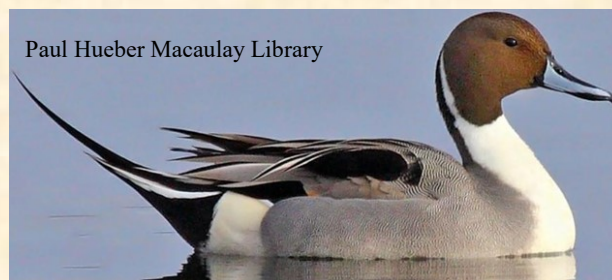
**Baskett Butte Trailhead Parking
(on Coville Rd), Baskett Slough NWR**

Dr. Jeff Snyder, Assistant Professor of Biology and Ecology at Western Oregon University will share his expertise about the swans who migrate to the Refuge in the winter months. Dr. Snyder's is currently studying Trumpeter Swans in the Willamette Valley. There will be a 0.75 mile walk up to the Rich Guadagno Observation Platform. **Please RSVP if you plan to attend** at <https://www.surveymonkey.com/r/G3SWQ97> . Questions? Contact Kris Ebbe (kristins540river@gmail.com). For a trail map of Baskett Slough NWR, visit: <https://www.fws.gov/uploadedFiles/baskett%20slough%20trail%20map.pdf>

“Dabbling in the Marshes with the OSU Bird Nerds”

**McFadden's Marsh
Trail Head (Bruce Rd)
William L. Finley NWR
Sun., February 3
1 - 3PM**

Learn about dabbling ducks with members of the Oregon State Bird Nerds, a student-run ornithological club. Learn why specific waterfowl stay at the refuges during the winter. Questions? Contact Kris Ebbe (kristins540river@gmail.com)





A Night for the Refuges.....

Friends Dine Out at Block 15: Tuesday, Feb. 5

Block 15 Pub, 300 SW Jefferson, Corvallis, 11 AM—11PM

Block 15 Tap Room, 3415 SW Deschutes, Corvallis 3 PM-9 PM

10% of all the food sold that day will be donated to the Friends of the Willamette Valley NWRC. Come enjoy a good meal and support our refuges at the same time.

Make a night of it.....

Block 15 Tap Talk: Your Wild Refuge Neighbors: Tuesday, Feb. 5

Block 15 Tap Room, 3415 SW Deschutes, Corvallis, 7-8:30 PM

Share an evening with Refuge staff and Friends members exploring the animal and plant treasures of William L. Finley NWR

Mark Your Calendars....



Winter Wildlife Field Day

Saturday, March 9th: 11 AM-3 PM

Refuge Office, William L. Finley NWR



Events at Ankeny NWR....

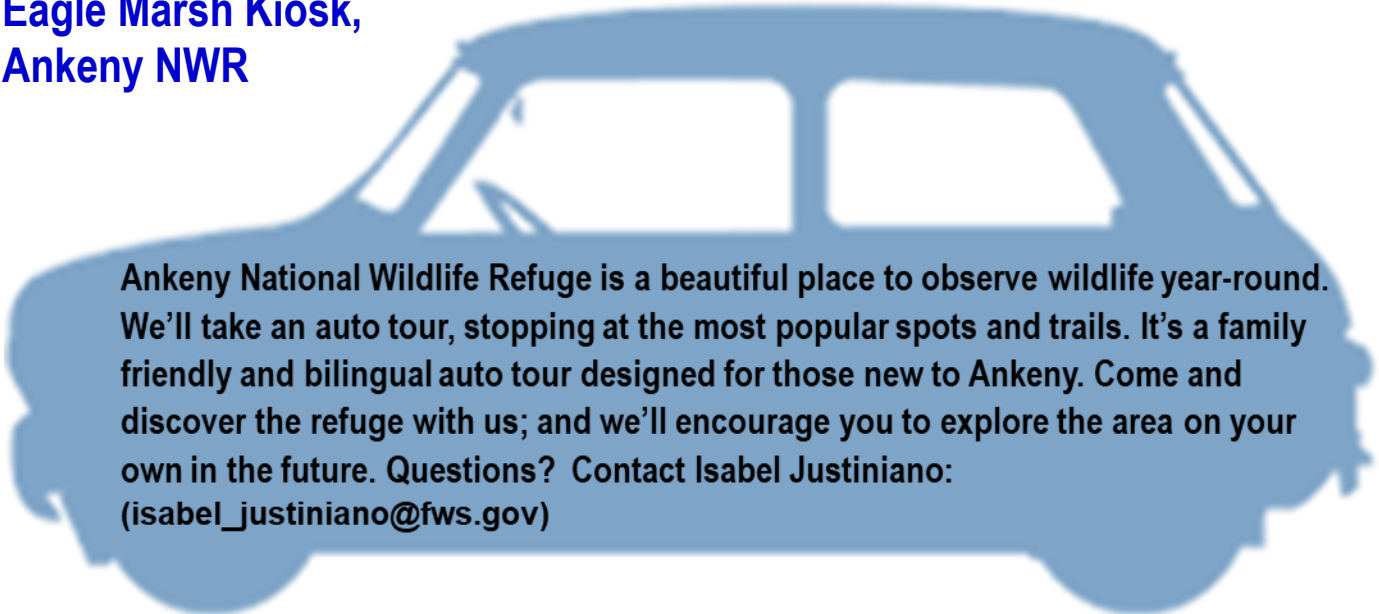
Wildflower Planting at the Ankeny Hill Nature Ctr Prairie Saturday February 9th, 10:00AM – 12:00PM Ankeny Hill Overlook, Ankeny NWR

Volunteers will have exclusive access to the Ankeny Hill Overlook (which is presently closed), as we come together to add 1550 wildflower plugs to the 2000 bulbs we have already planted around the new Ankeny Hill Nature Center. We have all the tools and some gloves; just dress for rain/mud. A Carpool from Corvallis is available at 9:00AM (RSVP for details). Please RSVP if you plan to attend. For questions and to RSVP please contact Samantha Bartling samantha_bartling@fws.gov

Riparian Planting at Ankeny National Wildlife Refuge Saturday February 23rd, 10:00AM – 12:00PM Rail Trail Parking Lot, Ankeny NWR

We'll cut and plant spirea and willow into the field we're restoring back to riparian habitat, next to Rail Trail. We also have ~500 trees that were ordered that will need to get planted (oak, ash and maple). Planting parties are fun! A Carpool from Corvallis is available at 9:00AM (RSVP for details). Please RSVP if you plan to attend. For questions and to RSVP please contact Samantha Bartling samantha_bartling@fws.gov

Ankeny National Wildlife Refuge Auto Tour Saturday, Jan 26, 10 AM Eagle Marsh Kiosk, Ankeny NWR



Ankeny National Wildlife Refuge is a beautiful place to observe wildlife year-round. We'll take an auto tour, stopping at the most popular spots and trails. It's a family friendly and bilingual auto tour designed for those new to Ankeny. Come and discover the refuge with us; and we'll encourage you to explore the area on your own in the future. Questions? Contact Isabel Justiniano: isabel_justiniano@fws.gov




“Geology & Related Ecology of the Refuges” Nature Walk

Sun., March 3, 1 - 3PM
William L. Finley NWR

Dr. Robert J. Lillie, OSU Emeritus Professor of Geosciences will share his expertise on the geology/ecology of the Willamette Valley Refuges. More details and meeting place to follow. Questions? Contact Kris Ebbe (kristins540river@gmail.com)

Photo: Debbie Maynard



Do you appreciate, enjoy, or just plain love our refuges? Maybe you have volunteered in the past and want to become more involved in the Friends organization. **Consider becoming a member of the Board of Directors of the Friends.** We meet monthly to discuss and plan activities and policies of the Friends. We also have several different committees for biology, outreach, publicity, events, etc. that welcome new members. Contact Dave Landkamer for info: djlandkamer@yahoo.com

Photo: Debbie Maynard



A New Outreach Era Begins for the Friends of the Willamette Valley NNWR Complex

The Friends launched a new series of monthly activities this fall. From now on, we will offer a special activity on the first Sunday of every month. The front pages of this newsletter will spotlight upcoming events; the inside pages will report on our past activities. Please watch our online calendar, this newsletter, and our posted announcements for Join us often as we find more ways to enjoy the natural resources at our amazing valley wildlife refuges.



Welcome Isabel Justiniano!

Isabel is our new Environment for the Americas (EFTA) intern. (<https://www.environmentamericas.org/>) She'll be a Willamette Valley Refuges' Visitor Services intern until June, coordinating our Latino Engagement Program, among other things. Isabel most recently was the Bird Conservation Program Coordinator for EFTA in Boulder, Colorado, which included international travel and coordinating World Migratory Bird Day events. She has also worked at the Hatfield Marine Science Center as a research assistant and at Yaquina Head doing bilingual park ranger duties and education. She was born in Bolivia, grew up in Rhode Island, and got her B.S. in Wildlife and Wildlands Conservation (w/ a minor in Environmental Science) from Brigham Young University. She loves Oregon and visited William L. Finley Refuge for Winter Wildlife Field Day in 2017! Her desk will be right up front as you walk into the Finley headquarters building, so say 'hi' next time you're over this way.





“Last Hurrah” Begins New Outreach Era for Friends

The Friends launched a new series of monthly activities on Sunday, October 7, by inviting members and refuge visitors to join an off-trail guided hike through the heart of William L. Finley National Wildlife Refuge. The “Last Hurrah” hike was designed to take advantage of the wide open, off-trail hiking opportunity at our local refuges that ends on the last day of October each year. On November 1st, hiking becomes more restrictive when the sanctuary season begins in preparation for the arrival of dusky Canada geese and other waterfowl from their northern summer breeding grounds.



The hike, led by Friends President Dave Landkamer, started at the refuge headquarters building with a short talk about the history of the refuges and their importance to wildlife /conservation in the Willamette Valley. The group then hiked east across newly-plowed fields that would later fill with rye grass, watching for wildlife and signs of elk, while enjoying the scenery and camaraderie. The four mile route continued along the south side of Cabell Marsh, turned south to climb over Pigeon Butte for sweeping views, then looped back north to return to headquarters. Highlights of the walk included many bird sightings, a colorful scatter of feathers from a recently predated barn owl, and good conversation. The sunny day was ideal.



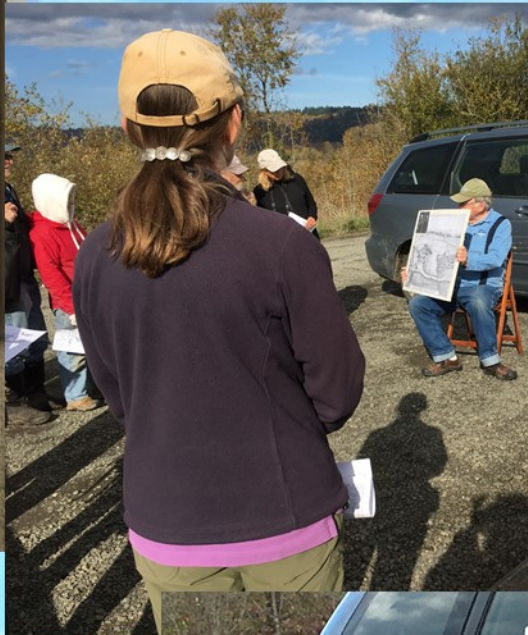
Story by Dave Landkamer

Photos: Debbie Maynard



Story by Kris Ebbe

The Visiting Geese of Ankeny Refuge



On November 4th we met Lowell Spring from the Salem Audubon Society at Ankeny Wildlife Refuge. We met at Eagle Marsh, which was suffering the effects of the drought. Lowell was very informative on how water is brought to the refuge, and about the history of Ankeny. Lowell talked about the history of the geese populations and their distributions in North America. We learned a lot about the migration of the Canada geese and their sub-species that settle in the valley to over winter here. We then went to Rail Trail further south at Ankeny where there was water and saw a fairly large congregation of Canada geese, some swans, other water fowl, and a Red-shouldered Hawk. It was a great day to be out learning about migration of Canada geese.



Photos: Debbie Maynard



Photo: Azizah Mohd

Many Answer the Elk Call

by Dave
Landkamer

“Calling All Elk” was the title of the most recent Friends first Sunday event on December 2nd at William L. Finley National Wildlife Refuge, and it attracted a lively crowd of over 60 enthusiastic refuge visitors. Friends President Dave Landkamer provided a talk about the taxonomy, distribution, biology and life history, and behaviors of the Roosevelt elk that live at Finley.

Next, the summary data from the Friends elk survey was presented and discussed. The Friends elk survey, initiated by Friends Biology Chair Azizah Mohd in August 2016, has completed nearly 300 surveys of the elk herd that resides mostly at William L. Finley Refuge. Graphs were presented at the talk to show how many and how often elk are seen at the surveys, how many bulls, cows and calves are present, the time of day they are seen, and where they are seen most often on the refuge. The audience asked numerous questions during the presentation, and the discussions that followed were lively and informative.

Finally, the group visited two survey stations where elk are most often seen and were thrilled when the elk herd made an appearance.



Photo: Julio Gallardo



Photo: Chris Quinn

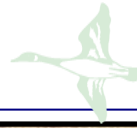
The Roosevelt Elk

by Dave Landkamer

Roosevelt elk, *Cervus canadensis roosevelti*, are the largest of six subspecies of elk in North America, and bulls can weigh over 1,100 pounds. Antlers on a mature bull elk are shed and regrown every year, can be longer than 50 inches with ten or more tines per antler, and can weigh over 40 pounds per pair. Elk are the second largest native animal in Oregon. Which is the largest? (See answer below.)

When Europeans arrived in North America, elk lived across the entire continent, and their population was estimated to be over 10 million. By the late 1800s, the population had been exterminated in most parts of the continent so that less than 100,000 (less than 1%) remained. Early conservationists, such as Theodore Roosevelt, recognized the importance of protecting elk and other animals from extinction, and created the beginnings of the National Wildlife Refuge System for that purpose. Roosevelt elk are appropriately named in his honor. Now the elk population has rebounded to over 1 million animals.

Answer: Moose, *Alces alces*



We are refuge volunteers. We like birds and snakes and deer.

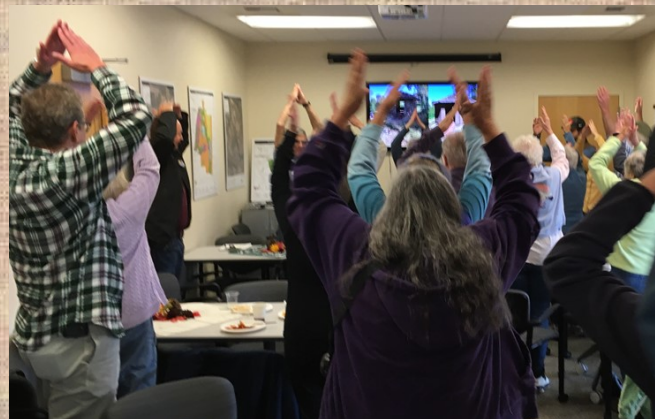


Good food, good people, and recognition of the efforts of our volunteers: The

2018 Volunteer Appreciation Luncheon

Samantha Bartling, Visitor Services Manager, and Damien Miller, USFWS project leader, expressed their thanks for the more than 3654 work hours performed by our 429 volunteers. Volunteer efforts are a valuable addition to the work of the limited refuge staff.

The Allaires, former on-site volunteers, taught the group the Refuge Volunteer Cheer (written at the top and bottom of the page).



Welcome to this special place. You'll meet nature face—to—face.



The elves got things ready



The presents appeared



And played Secret Santa

The Friends Holiday Party 2018



There was great food



We feasted!



Many people came



The Refuge staff joined in the fun, too.

More than 60 members of the Friends, Refuge staff, and their family and friends celebrated the holiday season together with a potluck at the Benton County Fairgrounds. We celebrated the successes of the past year, dined on dozens of dishes, and passed gifts right, left, and across the room during an energetic game of Secret Santa.



Bring a bit of the refuges home with you

*Wild Goose Nature Store at William L. Finley NWR
Open Fri., Sat., Sun. All year. 10AM—4PM*

Photo: Debbie Maynard



A Day of Birds 2018



Quill Drawing



Bird Banding Demo



Books for all ages

On a beautiful November day, 150 people visited the Day of Birds event in Corvallis. Participants took bird walks, saw live Red-tailed and Harris's Hawks, and enjoyed crafts and hands-on activities. There was an abundance of information about bird biology and ecology for both children and adults



The Friends were there.



The hawks were a hit.



Chintimini Wildlife Ctr. Bird Anatomy touch table



The Elk Bugle by David Landkamer

Our all-volunteer elk surveys gather information about the numbers and locations of bull, cow, and calf elk on William L. Finley National Wildlife Refuge, as well as information about other wildlife seen during the surveys. These data help the refuge staff make wise decisions about elk and wildlife resources management. The surveys also provide many hours of enjoyment and fulfillment for our volunteer surveyors. Thus far, nearly 300 surveys have been conducted by our Friends volunteers.

The dedicated US Fish and Wildlife Service staff are busy with numerous projects, and don't always get out into the field to observe the elk as often as they'd like. However, sometimes when they look out of their office windows at headquarters, an elk herd is right there for them to see and enjoy. This happened to Project Leader Damien Miller in November, when the largest herd observed all year showed up in the fields southeast of the building. The herd included 158 elk altogether; 9 large bulls, and 11 spikes. Now, that's an office view that most of us would love to have!

Here's the take home message from this elk story: Finley headquarters is one of the best places on the refuge to see elk, so when you drop in to visit the Wild Goose Nature Store, be sure to look out across those fields to the southeast to see if the elk are

Photo: wikipedia.org



Become a part of our elk survey!

Survey volunteers drive to different observation points in Finley refuge.

They look for elk and also record other wildlife that they see.

Enjoy observing wildlife while gathering important data to help the Refuge staff to conserve and protect our natural resources.

For more info go to:
friendswvnwrc.org/

Photo: Chris Quinn

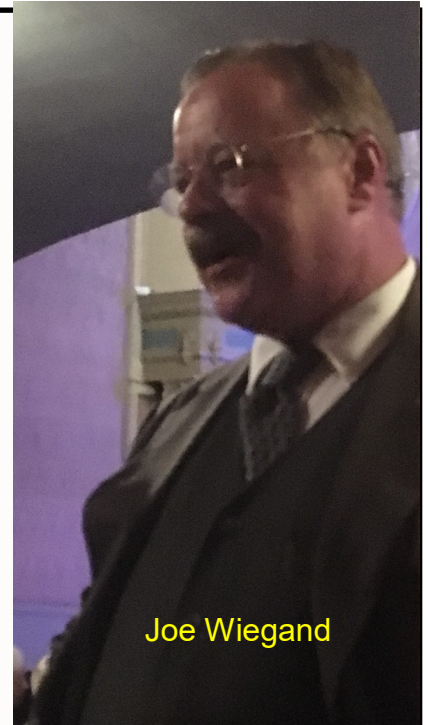


Theodore Roosevelt Visits Corvallis

History came alive at the Whiteside Theater when actor and historian Joe Wiegand performed his highly regarded one—man show. Mr. Wiegand is our nation's foremost Roosevelt reprimor, and his performance did not disappoint. He recounted many historical facts and interesting anecdotes with the energy and humor Roosevelt was known for. Members of the Friends and refuge staff caught the performance. To those who missed it: if Mr. Wiegand ever brings his show back to our area, see it.

The Friends, and people interested in conservation generally, have a special interest in Teddy Roosevelt. After becoming president in 1901, Roosevelt used his authority to protect wildlife and public lands by creating the United States Forest Service (USFS) and establishing 150 national forests, 51 federal bird reserves, 4 national game preserves, and 5 national parks (including Crater Lake in Oregon). By enabling the 1906 American Antiquities Act, he also created 18 national monuments (including the present Olympic National Park in Washington). During his presidency, Theodore Roosevelt protected approximately 230 million acres of public land.

<https://www.nps.gov/thro/learn/historyculture/theodore-roosevelt-and-conservation.htm>



Joe Wiegand



"We have fallen heirs to the most glorious heritage a people ever received, and each one must do his part if we wish to show that the nation is worthy of its good fortune."

- Theodore Roosevelt



(President's Message: continued from Page 1)

March 3: Geology and Related Ecology of the Refuges

Please see our website (freindswvnwrc.org) or our Facebook page (@FWVNWRC) for more information, and join us for these exciting activities and many more yet to come!

Dedicated volunteers donate their time, energy, and personal resources to create these outreach activities and share them with refuge visitors. This winter, our organization is conducting a fundraiser asking our members to make charitable contributions for the development and growth of our outreach materials and programs. If you haven't already done so, I encourage you to consider a tax-exempt donation to the Friends (for more information contact our secretary, Diane Young at secretary.friends@gmail.com) to support this important effort.

This time of year always gives me pause me to reflect upon all the things for which I am grateful. I am grateful for the special wildlife and habitats that we have in our Willamette Valley. I am grateful for our far-sighted system of national wildlife refuges and the talented professionals who have devoted their careers to serving in it. And I am grateful to all of our members and volunteers who selflessly work to protect our precious natural resources, for all of us to appreciate and enjoy.



Membership Form

☐ New Membership ☐ Renewal

Name: _____

Address: _____

City/State: _____ Zip: _____

Daytime Phone: _____

Email: _____

☐ Please check this box if you **DO NOT** wish to share your information directly with the Refuge Volunteer Coordinator for additional volunteer opportunities.

I am interested in these volunteer opportunities:

- ☐ Work Parties ☐ Special Events ☐ Wild Goose Nature Store
☐ Education Programs ☐ Board Member
☐ Habitat Restoration ☐ Grounds Maintenance
☐ Other _____

Annual Membership Categories

- ☐ \$10 Senior / Student
☐ \$15 Individual
☐ \$25 Family
☐ Volunteer*

All contributions in excess of membership fees are tax deductible under corporation guidelines.

\$ _____ Tax deductible donation

Please make checks payable to FWVNWRC.

* Please contact the Friends Volunteer Coordinator to see if you qualify.



Friends of the Willamette Valley
National Wildlife Refuge Complex

P.O. Box 2238
Corvallis, OR 97339

secretary.friends@gmail.com

Phone: 541-757-7236 Ext. 224

**VISIT US ONLINE AT
WWW.FRIENDSWVNWRC.ORG**